

GET TO FLETCHER

6/14/2012

---

---

---

---

---





---

---

---

### Houma-Thibodaux MPO

Responsible for the planning and programming of Federal transportation dollars in the Houma-Thibodaux urbanized area.

6/14/2012

---

---

---

---

---

---

---

---

### Good Earth Transit

GET is the public transit division of Terrebonne Parish Consolidated Government.

Operates five bus routes in Houma and Thibodaux.





6/14/2012

---

---

---

---

---

---

---

---

### Fletcher Technical Community College

Established in 1948

Currently located on St. Charles Street in Houma

Soon to open campus on LA 311



6/14/2012

---

---

---

---

---

---

---

---

### Fletcher Demographics

- Approximately 2,750 students
- Approximately 200 faculty staff
- Expected that 1,600-1,700 students, faculty and staff will be using the new LA 311 campus
- Survey results show that 67% of 134 student respondents (90 individuals) would be interested in GET service on the LA 311 campus
- Survey results show that 55% of 56 faculty/staff respondents (31 individuals) would be interested in GET service on the LA 311 campus

6/14/2012

---

---

---

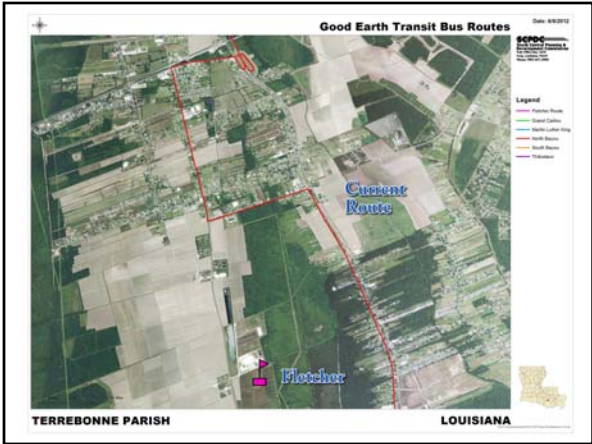
---

---

---

---

---



---

---

---

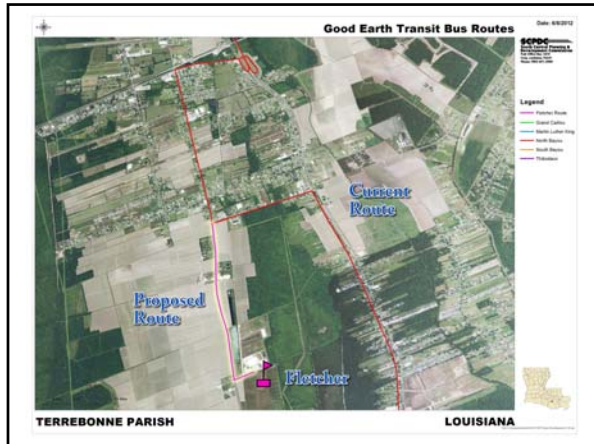
---

---

---

---

---



---

---

---

---

---

---

---

---

### How Much Will This Cost?

- Allocated cost of \$76.37 per bus per hour
- \$28,456 for remainder of 2012 fiscal year (through October)

6/14/2012

---

---

---

---

---

---

---

---

Questions  
or  
Comments?

6/14/2012

---

---

---

---

---

---

---

---