





GET TO FLETCHER

7/5/2012

Houma-Thibodaux MPO

Responsible for the planning and programming of Federal transportation dollars in the Houma-Thibodaux urbanized area.



7/5/2012

Good Earth Transit

GET is the public transit division of Terrebonne Parish Consolidated Government.

Operates five bus routes in Houma and Thibodaux.



7/5/2012

Fletcher Technical Community College

Established in 1948

Currently located on St. Charles Street in Houma

Soon to open campus on LA 311

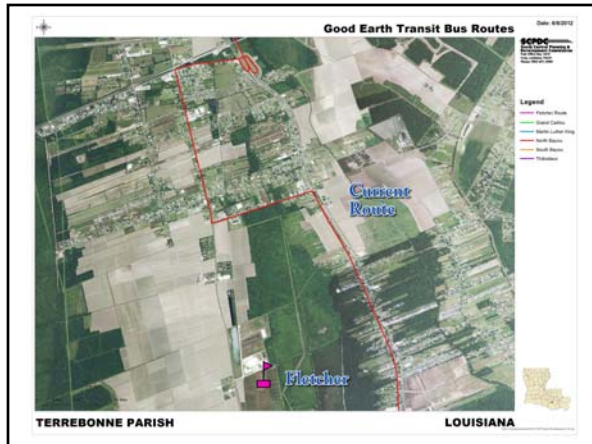


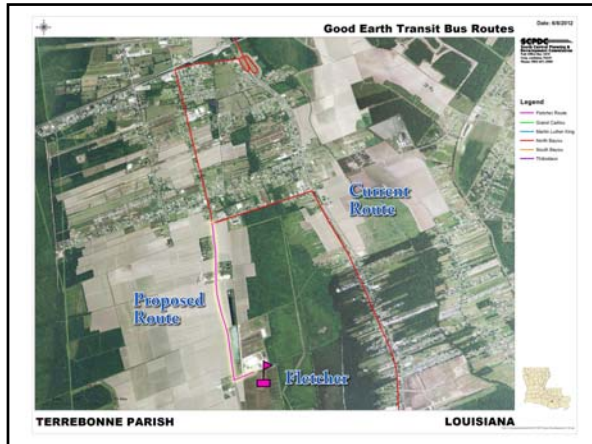
7/5/2012

Fletcher Demographics

- Approximately 2,750 students
- Approximately 200 faculty staff
- Expected that 1,600-1,700 students, faculty and staff will be using the new LA 311 campus
- Survey results show that 67% of 134 student respondents (90 individuals) would be interested in GET service on the LA 311 campus
- Survey results show that 55% of 56 faculty/staff respondents (31 individuals) would be interested in GET service on the LA 311 campus

7/5/2012





How Much Will This Cost?

- Allocated cost of \$76.37 per bus per hour
- \$28,456 for remainder of 2012 fiscal year (through October)

7/5/2012

Questions
or
Comments?

7/5/2012
